

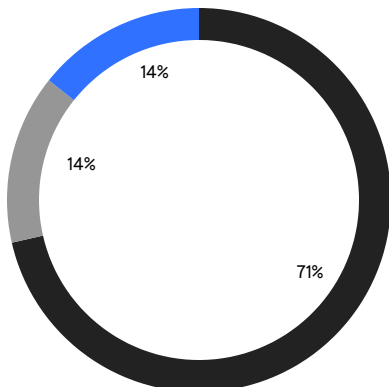
# QUEENS WEEKLY LUXURY REPORT



14-21 161ST ST

RESIDENTIAL CONTRACTS  
\$1.25 MILLION AND UP

- NORTHEASTERN QUEENS
- NORTHWESTERN QUEENS
- SOUTHEASTERN QUEENS



7

CONTRACTS SIGNED  
THIS WEEK

\$11,972,000

TOTAL CONTRACT VOLUME

The Queens luxury real estate market, defined as all properties priced \$1.25M and above, saw 7 contracts signed this week, made up of 7 houses. The previous week saw 9 deals. For more information or data, please reach out to a Compass agent.

**\$1,710,286**

AVERAGE ASKING PRICE

**\$1,498,000**

MEDIAN ASKING PRICE

**\$796**

AVERAGE PPSF

**0%**

AVERAGE DISCOUNT

**\$11,972,000**

TOTAL VOLUME

**106**

AVERAGE DAYS ON MARKET

150-12 Sullivan Drive in Whitestone entered contract this week, with a last asking price of \$2,799,000. Built in 2022, this single-family home offers 4 beds and 3 full baths. It features high-end architectural details throughout, hardwood floors, a marble entry, high ceilings, a garage with sloped entry, a kitchen with stainless steel appliances and abundant cabinet space, and much more.

Also signed this week was 64-26 Bell Boulevard, with a last asking price of \$1,899,000. Built in 2022, this single-family house offers 5 beds and 5 full baths. It features an open foyer with high ceilings and chandelier, a front walkway, a carved spiral staircase, a fully-finished attic, hardwood floors, a backyard and adjacent patio, and much more.

**0**

CONDO DEAL(S)

**0**

CO-OP DEAL(S)

**7**

TOWNHOUSE DEAL(S)

**\$0**

AVERAGE ASKING PRICE

**\$0**

AVERAGE ASKING PRICE

**\$1,710,286**

AVERAGE ASKING PRICE

**\$0**

MEDIAN ASKING PRICE

**\$0**

MEDIAN ASKING PRICE

**\$1,498,000**

MEDIAN ASKING PRICE

**\$0**

AVERAGE PPSF

**\$796**

AVERAGE PPSF

**0**

AVERAGE SQFT

**1,869**

AVERAGE SQFT



### 150-12 SULLIVAN DR

Whitestone

TYPE	TOWNHOUSE	STATUS	CONTRACT	ASK	\$2,799,000	INITIAL	\$2,799,000
SQFT	N/A	PPSF	N/A	BEDS	4	BATHS	3.5
FEES	N/A	DOM	175				



### 64-26 BELL BLVD

Oakland Gardens

TYPE	TOWNHOUSE	STATUS	CONTRACT	ASK	\$1,899,000	INITIAL	\$1,950,000
SQFT	N/A	PPSF	N/A	BEDS	5	BATHS	5
FEES	N/A	DOM	150				



### 27-25 12TH ST

Astoria

TYPE	TOWNHOUSE	STATUS	CONTRACT	ASK	\$1,600,000	INITIAL	N/A
SQFT	1,836	PPSF	\$872	BEDS	4	BATHS	3
FEES	\$671	DOM	N/A				



### 23-07 160TH ST

Flushing

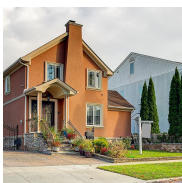
TYPE	TOWNHOUSE	STATUS	CONTRACT	ASK	\$1,498,000	INITIAL	\$1,498,000
SQFT	1,840	PPSF	\$814	BEDS	3	BATHS	1.5
FEES	\$850	DOM	169				



### 84-40 KENDRICK PL

Jamaica Estates

TYPE	TOWNHOUSE	STATUS	CONTRACT	ASK	\$1,450,000	INITIAL	\$1,450,000
SQFT	2,475	PPSF	\$586	BEDS	5	BATHS	4
FEES	\$767	DOM	102				



### 30-11 152ND ST

Murray Hill

TYPE	TOWNHOUSE	STATUS	CONTRACT	ASK	\$1,438,000	INITIAL	\$1,438,000
SQFT	1,599	PPSF	\$900	BEDS	3	BATHS	1.5
FEES	\$943	DOM	19				

Compass is a licensed real estate broker and abides by Equal Housing Opportunity laws. All material presented herein is intended for informational purposes only. Information is compiled from sources deemed reliable but is subject to errors, omissions, changes in price, condition, sale, or withdrawal without notice. No statement is made as to the accuracy of any description. All measurements and square footages are approximate. This is not intended to solicit property already listed. Nothing herein shall be construed as legal, accounting or other professional advice outside the realm of real estate brokerage.



### 33-61 168TH ST

Murray Hill

TYPE	TOWNHOUSE	STATUS	CONTRACT	ASK	\$1,288,000	INITIAL	\$1,288,000
SQFT	1,594	PPSF	\$808	BEDS	4	BATHS	3.5
FEES	\$699	DOM	19				

Compass is a licensed real estate broker and abides by Equal Housing Opportunity laws. All material presented herein is intended for informational purposes only. Information is compiled from sources deemed reliable but is subject to errors, omissions, changes in price, condition, sale, or withdrawal without notice. No statement is made as to the accuracy of any description. All measurements and square footages are approximate. This is not intended to solicit property already listed. Nothing herein shall be construed as legal, accounting or other professional advice outside the realm of real estate brokerage.

© 2023 Compass. This report and information provided in this report are proprietary to Compass and may not be sold, used or reprinted, in whole or part, without the prior written consent in each instance of Compass. Data is subject to revision. Sourced from Compass proprietary database. All rights reserved.

[compass.com](https://www.compass.com)